



ASKING PRICE

£250,000

London Lane

Bromley, BR1 4HX

PROPERTY SUMMARY

This ground floor 545 sq ft purpose built flat is offered to the market chain free and is priced very competitively in our opinion, ideal for First Time Buyers. Internally the property comprises entrance hall with two large storage cupboards, large lounge over looking the communal gardens to the front, fitted kitchen, double bedroom and bathroom. Further benefits include original Parquet flooring, double glazing, gas central heating, off street parking and long lease. Russell Court can be found approximately 0.7 miles away from Sundridge Park train station and Bromley town centre with its many shops, bars and restaurants.

1



1



1

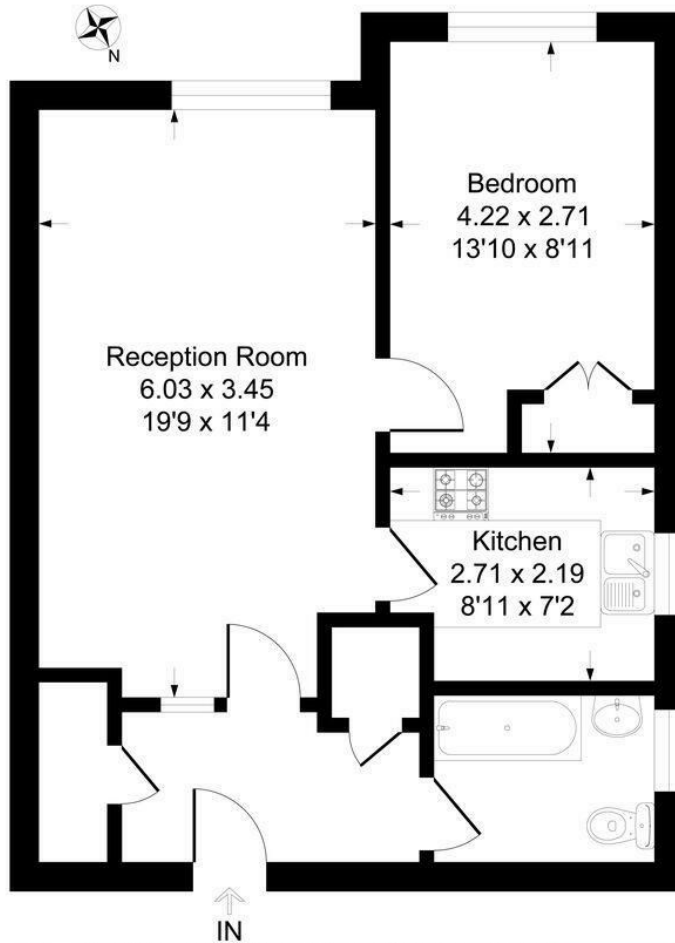






Russell Court, London Lane, BR1

Approximate Gross Internal Area 50.6 sq m / 545 sq ft



This plan is for layout guidance only. Not drawn to scale unless stated. Windows and door openings are approximate. Whilst every care is taken in the preparation of this plan, please check all dimensions, shapes and compass bearings before making any decisions reliant upon them.

Produced By Planpix



LOCAL AUTHORITY

TENURE

Leasehold

EPC RATING:

C

COUNCIL TAX BAND

C

VIEWINGS

By prior appointment only

Energy Efficiency Rating		Current	Potential
Very energy efficient - lower running costs			
(92 plus) A			
(81-91) B			
(69-80) C		70	74
(55-68) D			
(39-54) E			
(21-38) F			
(1-20) G			
Not energy efficient - higher running costs			
England & Wales		EU Directive 2002/91/EC	

Agents Note: Whilst every care has been taken to prepare these particulars, they are for guidance purposes only. All measurements are approximate and are for general guidance purposes only and whilst every care has been taken to ensure their accuracy, they should not be relied upon and potential buyers/tenants are advised to recheck the measurements

Sinclair Hammelton

OFFICE ADDRESS

23 High Street
Bromley
Kent
BR1 1LG

OFFICE DETAILS

0208 464 5566
info@sinclairhammelton.co.uk